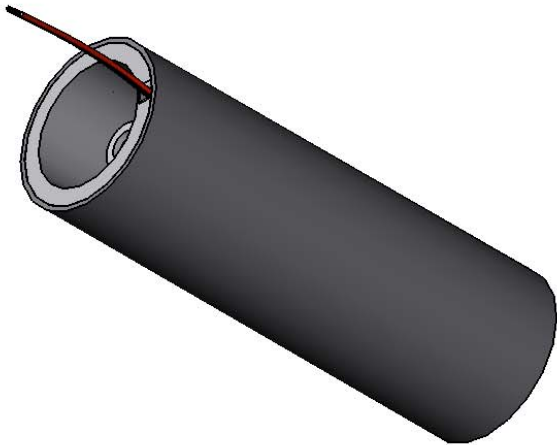
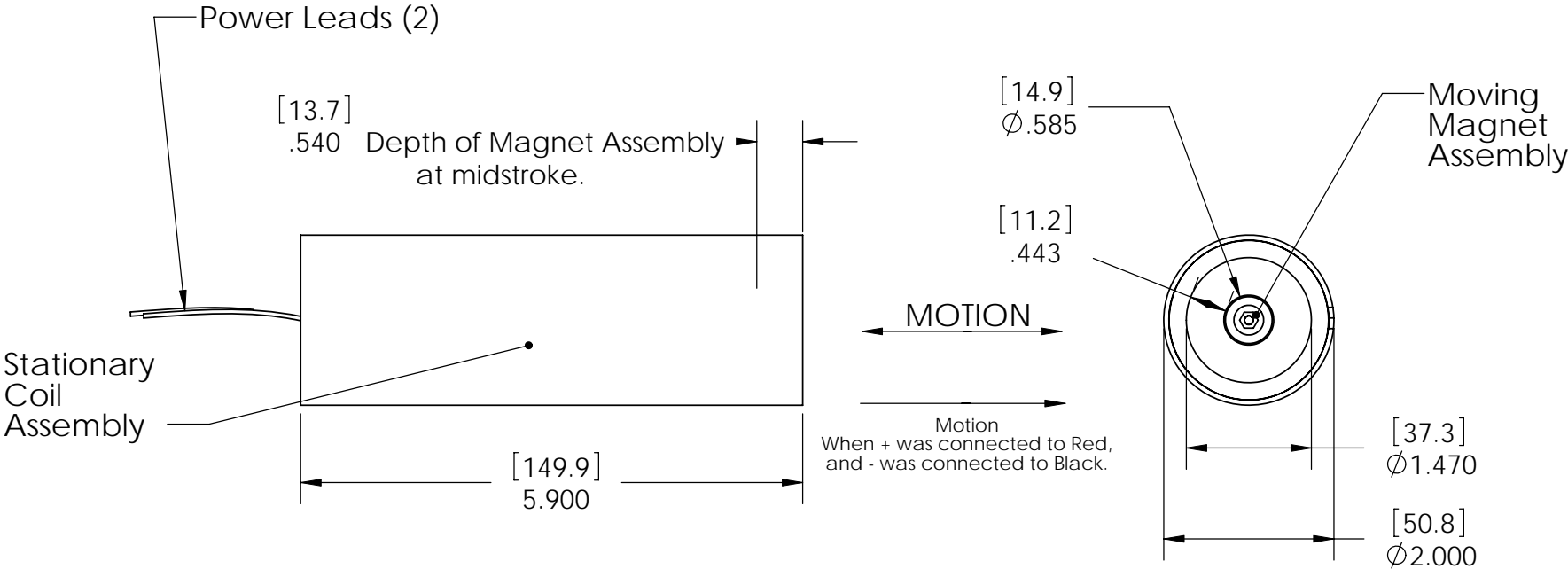


These drawings and specifications are the property of H2W Technologies, Inc. They are issued in confidence and shall not be reproduced, copied, or used without written permission from H2W Technologies, Inc. (www.h2wtech.com)



UNLESS SPECIFIED OTHERWISE:  
All dimensions are in inches  
Standard Tolerances are as follows:  
.XXX ±.005 ANGLES ±1°  
XX ±.010 FILLETS .010  
X ±.020 CORNERS .010  
Remove All Burrs and Sharp Edges

**MATERIAL**

**FINISH**

DRAWN  
JRM

DATE  
8-22-07

APPROVED  
MPW

DATE  
8-22-07

**TITLE**

Moving Magnet Non-Comm DC Linear Actuator  
**Model# NCM03-20-005-3R**

**DWG #**

**30-0586**

**REV**

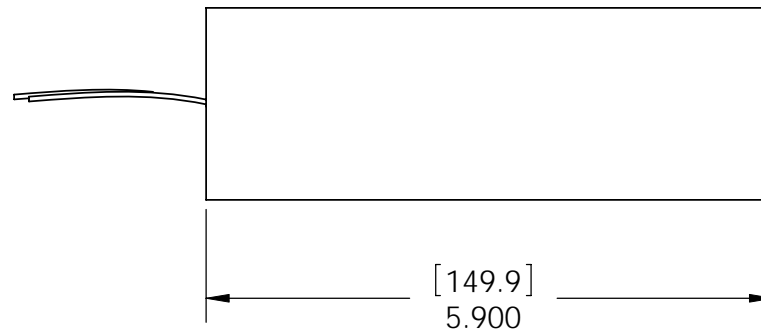
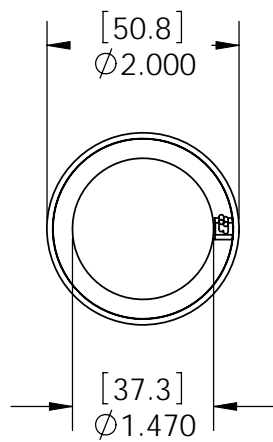
**C**

**SHEET**

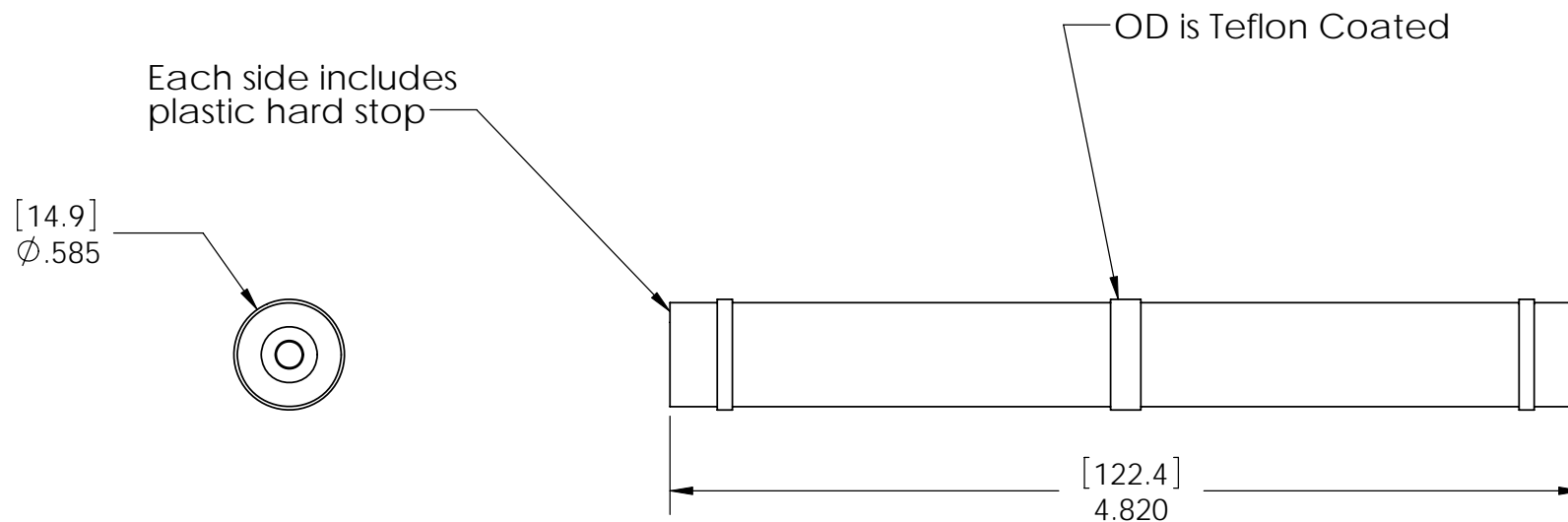
1 of 4

**H2W Technologies, Inc.**

28310-C Ave Crocker Valencia, CA 91355 USA  
Tel: (661)-702-9346 Fax: (661)-702-9348  
www.h2wtech.com



TITLE	NCM03-20-005-3R Coil Assembly		
DWG #	30-0586	REV	C
SHEET	2 of 4		



TITLE			<b>NCM30-20-005-3R</b>		
			<b>Magnet Assembly</b>		
DWG #	<b>30-0586</b>		REV	<b>C</b>	
			SHEET	3 of 4	

<b>MOVING MAGNET NON-COMM ACTUATOR SPECIFICATIONS</b>		
Motor P/N	NCM03-20-005-3R	
Stroke	0.250"	6.4 mm
Radial Clearance	0.443" per side	11.3 mm per side
Bearing Type	None	
Moving Mass	0.28 lbs	129 grams
Total Mass	1.74 lbs	790 grams
Resistance @ 20C	3.2 ohms	
Inductance @ 20C	2.50 mH	
Electrical Time Constant	0.78 msec	
Motor Constant	0.45 LBS/SQRT(Watt)	1.99 N/SQRT(Watt)
Force Constant	0.80 LBS/Amp	3.6 N/Amp
Back EMF	0.09 V/ips	3.6 V/m/sec
Continuous Force	0.50 LBS	2.2 N
Max Power @ 100% Duty	1 Watt	
Peak Force	1.50 LBS	6.7 N
Max Power @ 10% Duty	11 Watts	